

How to install an LMS network license server

LMS Network License Server Setup Instructions

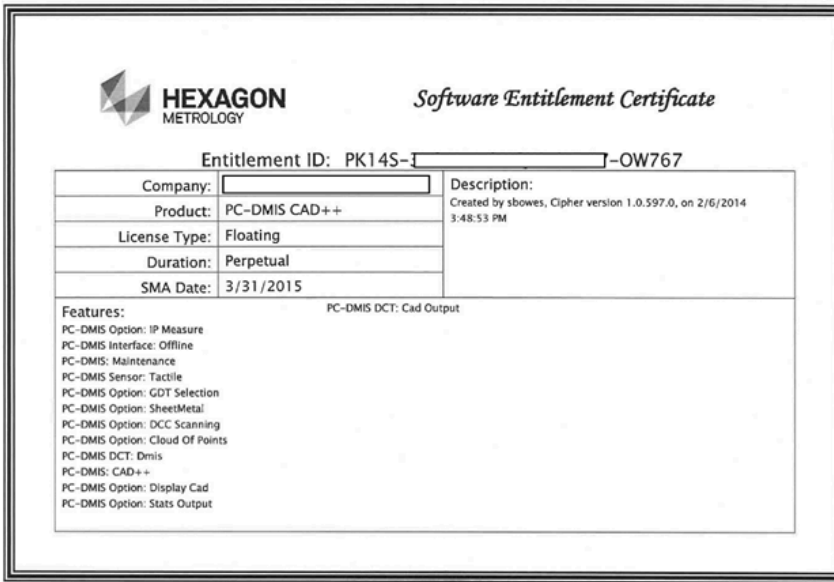
VER 1.2

Hexagon Metrology/Wilcox Network License Server Setup Instructions

⚠ If the installation is to take place on a virtual machine, please contact your local Hexagon representative.

Prerequisites:

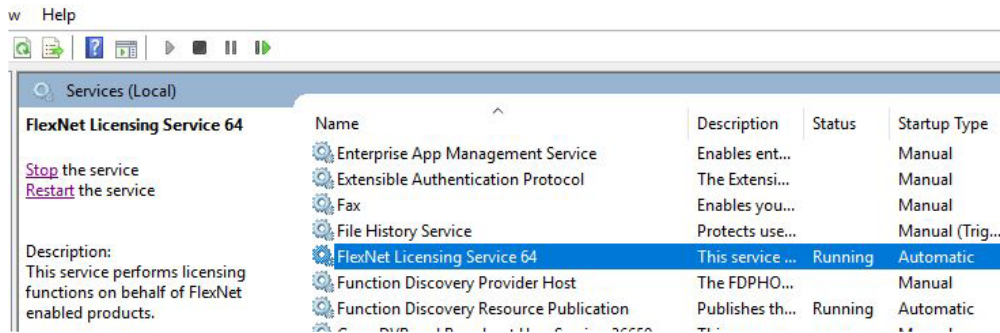
- Extract the installation and support files from “License Server Install Files ***.zip”. <https://downloads.ms.hexagonmi.com/Licensing/LMS/LicenseServer>
- Your company’s Entitlement ID (EID) for floating license activation will be included on a Software Entitlement Certificate



Install the CLM tools on license server

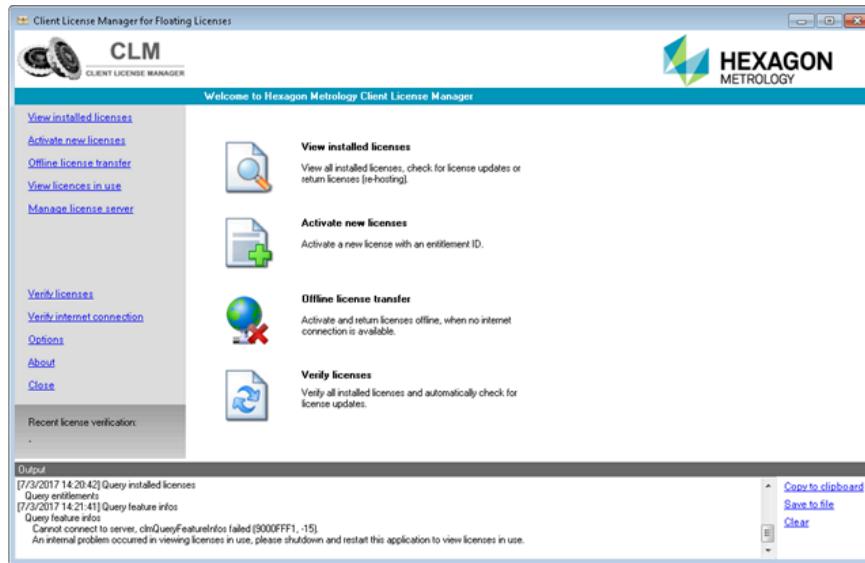
License activation software is needed to activate the licenses on your LMS (license) server. To install this software, extract and right-click the CLM tools installer (CLMServer_Release_1.8.64.0_x64.exe or latest version available) to *Run as administrator* (accept all defaults)

Once installed verify that the following license-related services installed correctly. Open the Services control panel application and verify that a new service called “**FlexNet Licensing Service 64**” exists. This service acts as an interface between software and FLEXnet Trusted Storage. Also verify that an additional service called “**HM Remote Management Daemon x64**” was installed.



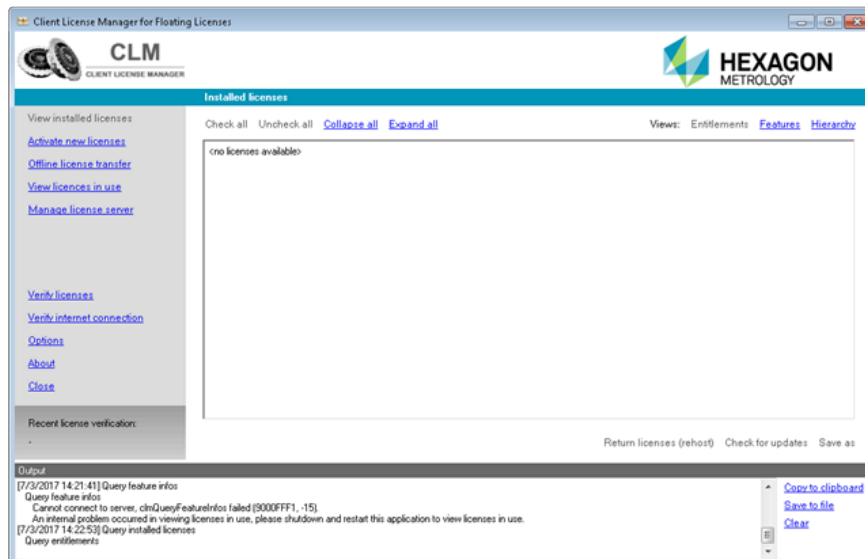
Activate the licenses using CLM Server Admin

Launch the program under *Start- All Programs- CLM Server 1.8 64-bit*. Take care not to confuse this with the application “CLM 1.7/1.8”



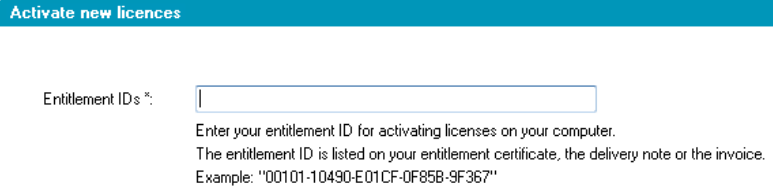
The CLM Server application allows you to view the licenses that are currently installed in trusted storage, as well as install new licenses using an entitlement ID. Note that trusted storage uses the location - *C:\ProgramData\FLEXnet*

To see any licenses that are already installed in Trusted Storage click “View installed licenses”. For brand-new server installations, no licenses will be found as shown.

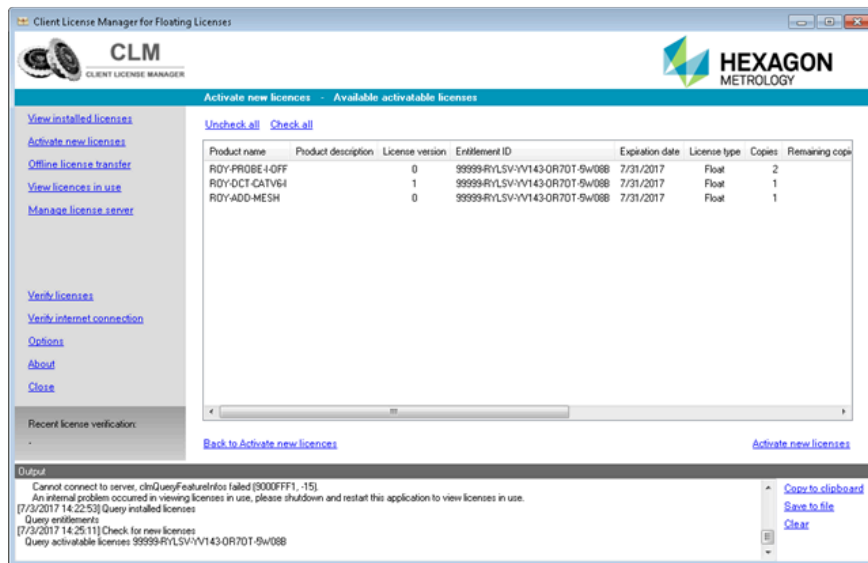


To activate your license:

1. Click on “Activate new licenses” in the top left.



2. On the screen that appears, enter the prerequisite entitlement ID (EID) that was previously supplied for your licenses.
3. Click on “Check for activatable licenses” in the bottom right. On the screen that follows, information about the license will be shown. Review it for accuracy.



4. If the product licenses appear correct, click “Activate new licenses” in the *bottom right-hand corner* (not the link in the upper left.) The license will be activated at this time.
5. When the operation finishes, click “View installed licenses” on the left. Your licenses should now be displayed.

Install the "ladmin" server and service

⚠ Flexera provides two different license server technologies - ladmin and lmgrd- with ladmin being the newer technology. If you do not already have a license server installation using lmgrd, we recommend that you use the ladmin server, because it will be supported by Flexera into the future. If you still prefer the older technology lmgrd refer to the addendum at the end of this document for more information.

The “ladmin” installer uses InstallAnywhere to extract the installation files, which requires a JDK.

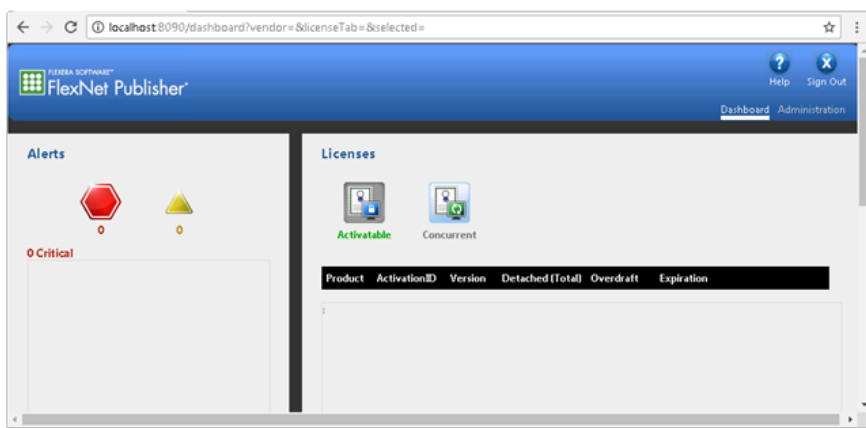
Install the following open source jdk <https://adoptium.net/en-GB/>

Install LmAdmin from the extracted file.

- When you reach the “Important Information” page, check the box to install the Visual C++ 2010 redistributable package, if it is not already installed.
- When you reach the “Service Configuration” page, check the “Run As Service” checkbox so that the new “ladmin” service starts automatically with Windows.

- When the installation is complete, go back to your Services panel and verify that the Imadmin service has been installed. Start the service if it is not yet started. If you cannot find the “Imadmin” in your service panel, follow these steps:
 - a. Open a command prompt as administrator
 - b. Change to the directory where Imadmin.exe resides. This will be the installation folder that you chose during the install-typically C:\Program Files\FlexNet Publisher 64-bit License Server Manager
 - c. Enter the following command to install/register the “Imadmin” service: Imadmin.exe - installService
 - d. Open the Services control panel application and find the “Imadmin” service. Start the service if it not already running.

Next open the following URL- <http://localhost:8090> - in a web browser. The FLEXnet splash page should appear with “Help” and “Sign Out” in the upper right-hand corner. If you can access this page, you are ready to install the WILCOX vendor daemon and license file.



Installing the WILCOX vendor daemon in Imadmin

From the original, extracted installation files copy the following three files to the installation folder- c:\Program Files\FlexNet Publisher 64-bit License Server Manager folder - which contains the Imadmin.exe executable:

- WILCOX.exe
- wilcox_libFNP.dll
- WilcoxJumpStart.lic

In the FlexNet web admin console- <http://localhost:8090> -click on the “Administration” link in the upper right-hand corner. You will be prompted for credentials- enter the username “admin” with the **one-time password** of “admin”. Next you will then be prompted to change the admin password - choose a new password and *safe keep it for later use*

✘ If the new admin password is ever lost/ forgotten you must reinstall the entire license server.

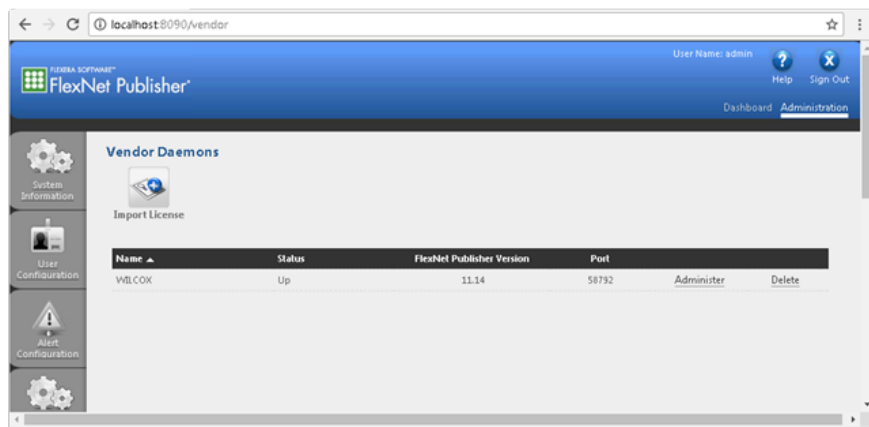
After changing the admin password perform the following:

1. Click on the “Vendor Daemon Configuration” tab on the bottom left-hand corner of the page.
2. On the “Vendor Daemons” page that appears, click the “Import License” button.
3. On the “Import License File” page, click the “Choose File” button.
4. Browse to the install folder above containing the WilcoxJumpStart.lic and select this file.
5. Click the “Import License” button.

6. You should see two messages:

- Successfully uploaded license file to "...\\licenses\\WILCOX\\WilcoxJumpStart.lic".
- Configured new vendor daemon, WILCOX.

Click on the OK button. At this point you should see Wilcox vendor daemon as shown:



To see available license, browse back to the Dashboard.

1. Click on the Dashboard link in the upper right-hand corner.
2. If there is more than one Daemon running, choose "WILCOX" in the combo box, and then click the "Select" button. Otherwise you will see "Vendor Daemon: Wilcox" displayed
3. Click on the "Concurrent" button in the "Licenses" section. You should see a list of features in your license and the number of seats available and in use.



Install PC-DMIS to access networked license server

Perform the following install steps on your PC(s) to ensure PC-DMIS uses the network licenses just installed:

1. On the client PC right-click the PC-DMIS installer to *Run as administrator* to launch it.
2. When prompted for the license type choose the "LMS License Server" option
3. In the License Server(s) box, enter the license server hostname or IP address starting with the "@" symbol. For example:

✓ Single Server Example

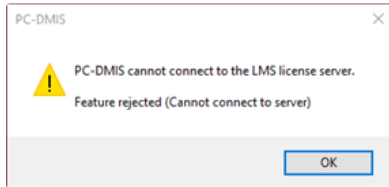
@LicenseServer

@192.168.1.201

✓ Multiple Server Example

@server1;@server2;@server3

4. After choosing *Next* the installer will install PC-DMIS.
5. At the completion of installation, select the “Launch PC-DMIS 201X” checkbox if it is not already checked and select “Close”. PC-DMIS will launch and attempt to connect to the license server specified. If a successful connection is made, PC-DMIS will start as expected. Otherwise, a message will appear indicating that PC-DMIS *cannot connect to the license server.



⚠ Refer to [the following support article](#) on how to troubleshoot connections to the network license server

Related articles

☰ [How to install an LMS network license server](#)

Error loading the extension!